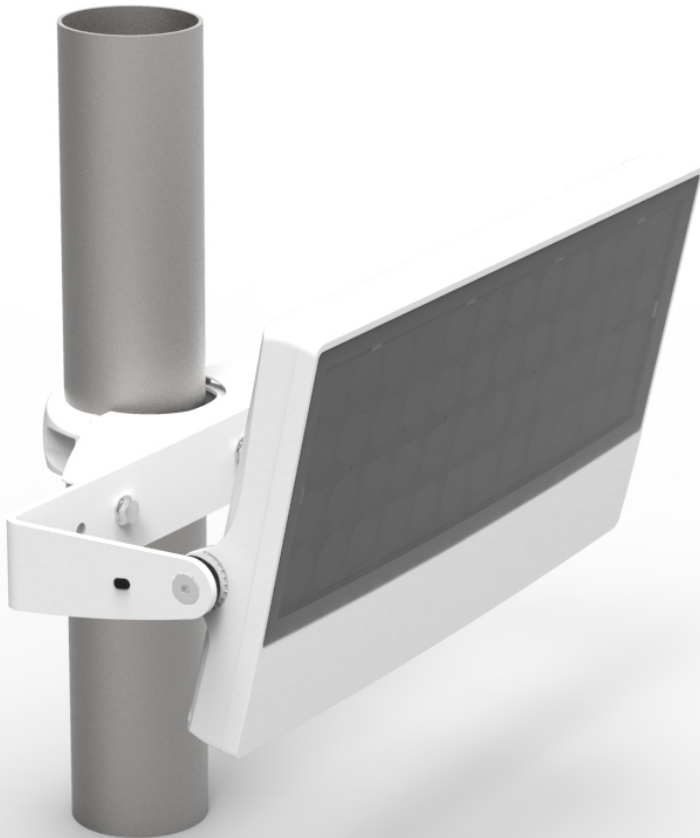


LS6317 LS6318
LS6319 LS6320

INSTALLATION INSTRUCTIONS
POLE CLAMP MOUNT FOR
LS9160 & LS9180

 **LUMASCAPE**
USA | Australia | Asia | Middle East | Europe



For use with
LS9160 & LS9180

LS6317 3" Pole Clamp

LS6318 4" Pole Clamp

LS6319 4.5" Pole Clamp

LS6320 5" Pole Clamp

READ ALL SAFETY INSTRUCTIONS FIRST

- › Follow instructions carefully, failure to do so will void warranty.
- › Ensure installation complies with local law and applicable standards.
- › This instruction is for the mechanical installation of the pole clamp only. For details on electrical connections refer to luminaire specific instructions.
- › Do not make modifications or alter the product.

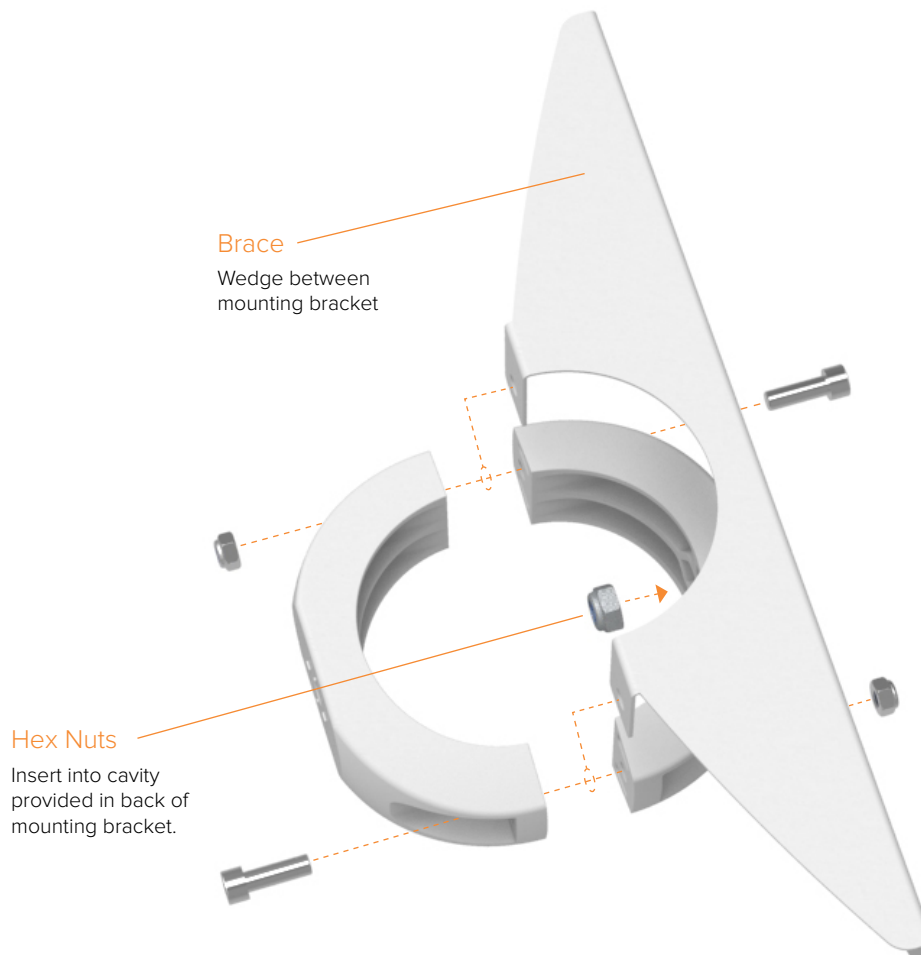
LUMASCAPE ASIA PACIFIC Brisbane Technology Park, 18 Brandl Street, Eight Mile Plains, QLD 4113, Australia
Phone +61 7 3854 5000 | Fax +61 7 3854 5001 | Email: sales@lumascape.com.au | www.lumacape.com.au

LUMASCAPE NORTH AMERICA 1300 Industrial Road, Unit #19, San Carlos, CA 94070, USA
Phone +1 650 595 5862 | Fax +1 650 595 5820 | Email: info@lumascape.com | www.lumacape.com

Products and specifications are subject to change without notice.

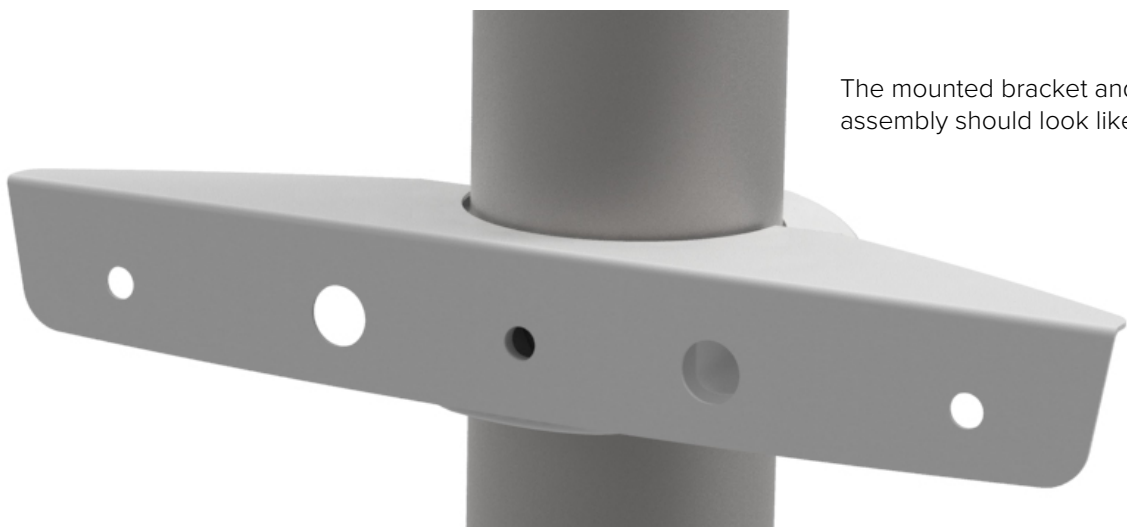
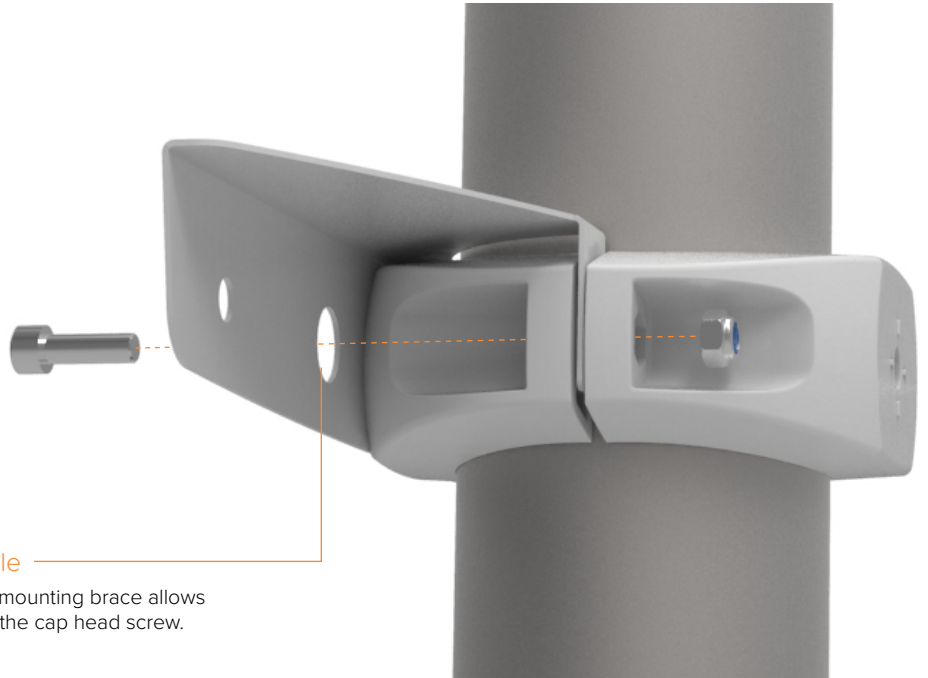
Assemble Brace and Mounting Bracket

- Step 1** Start by attaching the brace to the pole mounting bracket as shown below. Get all the components into place, do not assemble the bracket until you got it around the pole as shown in step 2.
NOTE: remember to insert the hex nut into the back of the mounting bracket.



Attach Bracket and Brace Assembly to Pole

Step 2 Put the brace and pole mounting bracket around the pole and tighten screws. Make sure cap head screws face in opposite direction to brace to allow easy access. **HINT:** Leave one of the mounting screws a bit loose, so you can rotate the bracket around the pole. Once it faces into the desired orientation, tighten the second screw to lock the bracket into place.



The mounted bracket and brace assembly should look like this.

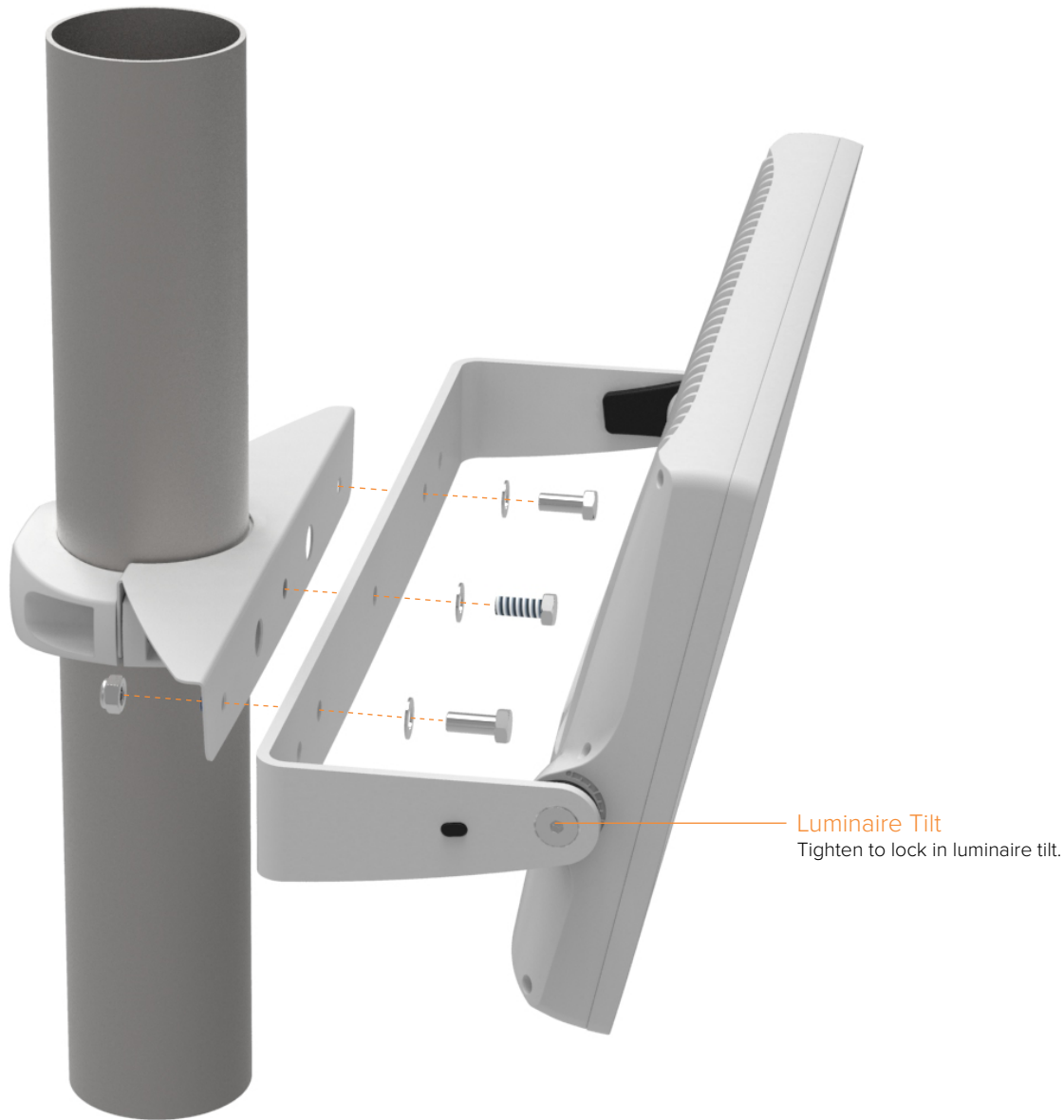
LS6317 LS6318
LS6319 LS6320

INSTALLATION INSTRUCTIONS
POLE CLAMP MOUNT FOR
LS9160 & LS9180

 **LUMASCAPE**
USA | Australia | Asia | Middle East | Europe

Attach Luminaire to Bracket and Brace Assembly

Step 3 Bolt the luminaire to the brace as shown below. Please note that at this time the luminaire can be rotated around the centre bolt to face in an upward or downward direction. **NOTE:** Do not use centre screw longer than the one provided as it will damage the mounting bracket and void warranty. Use washers. Adjust luminaire tilt and tighten hex screws to lock luminaire tilt into place. Make electrical connection on accordance to local wiring rules. Refer to luminaire installation instructions for details on electrical connections.



 **QUESTIONS** Contact us at details below.

LUMASCAPE ASIA PACIFIC Brisbane Technology Park, 18 Brandl Street, Eight Mile Plains, QLD 4113, Australia
Phone +61 7 3854 5000 | Fax +61 7 3854 5001 | Email: sales@lumascape.com.au | www.lumascape.com.au

LUMASCAPE NORTH AMERICA 1300 Industrial Road, Unit #19, San Carlos, CA 94070, USA
Phone +1 650 595 5862 | Fax +1 650 595 5820 | Email: info@lumascape.com | www.lumascape.com

Products and specifications are subject to change without notice.